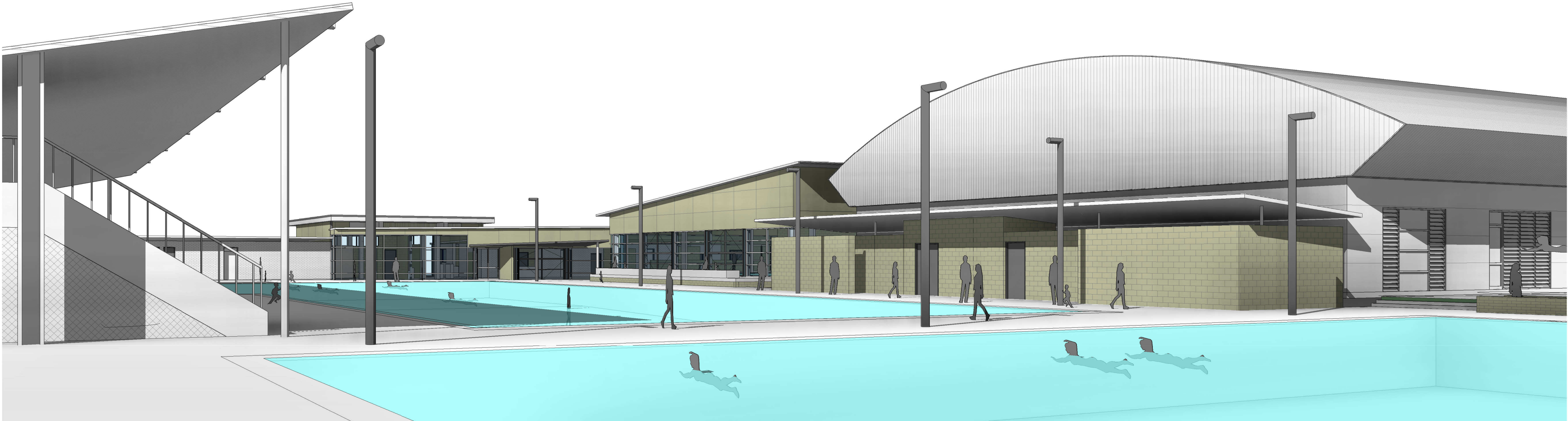


1 Perspective View - Entry



2 Perspective View - From SW Over Water Polo

C	29/09/2016	Updated DA	DM
B	28/04/2016	DA Issue	DM
A	12/04/2016	DA Draft	DM
No.	Date	Description	Chld
Issue			
Project Manager			
ROC Projects			
264 George Street, Sydney, NSW 2000, Australia			
T: 0414 672 951 F: -			
E: -			
Structural & Civil Engineer			
ABC Consultants			
Suite 2 Building C, Rhodes Corporate Park, NSW 2138			
T: 61 2 9746 9201 F: 61 2 9746 9207			
E: info@abc-consultants.com.au			
Hydraulic & Electrical Engineer			
Jones Nicholson			
Mezz. Lvl, 50 Carrington St, Sydney, NSW 2000			
T: 61 2 9521 3088 F: 1300 721 533			
E: mail@jonesnicholson.com.au			
Water Treatment & Mechanical Engineer			
Stevenson & Associates			
PO Box 17, Seaforth, NSW 2092, Australia			
T: 61 2 9018 9189 F: -			
E: paul@sa-consultants.com.au			
Traffic Engineer			
Gennaoui Consulting Pty Ltd			
-			
T: 61 2 9555 1381 F: -			
E: gennaoui1@bigpond.com			
Acoustic Consultant			
JHA			
Level 3, 146 Arthur St, North Sydney NSW 2060			
T: 61 2 9437 1000 F: -			
E: Claudiu.Pop@jhaengineers.com.au			

Architect			
NBRS+PARTNERS			
Level 3, 4 Glen Street, Milsoms Point. NSW 2061 Australia			
T: 61 2 9922 2344 F: 61 2 9922 1308			
E: architects@nbsap.com.au W www.nbsap.com.au			
Any form of replication of this drawing in full or in part without the written permission of NBRS+PARTNERS Pty Ltd constitutes an infringement of the copyright.			
ABN 16 002 247 565			
Nominated Architects: Geoffrey Deane reg No. 3766;			
Andrew Duffin reg No. 5602; Garry Hoddinett reg No. 5286			
© 2016			

Project & Client	
Redevelopment of Ashfield Aquatic Centre	
at	
Frederick St & Elizabeth Street, Ashfield, NSW 2131	
for	
Ashfield Council	
Drawing Title	
Perspectives - Sheet 2	

Date	5/10/2016 5:59:15 PM
Scale	@ A1
Drawing Reference	15518-DA 501 -C